

Drought Impacts on Disadvantaged Communities

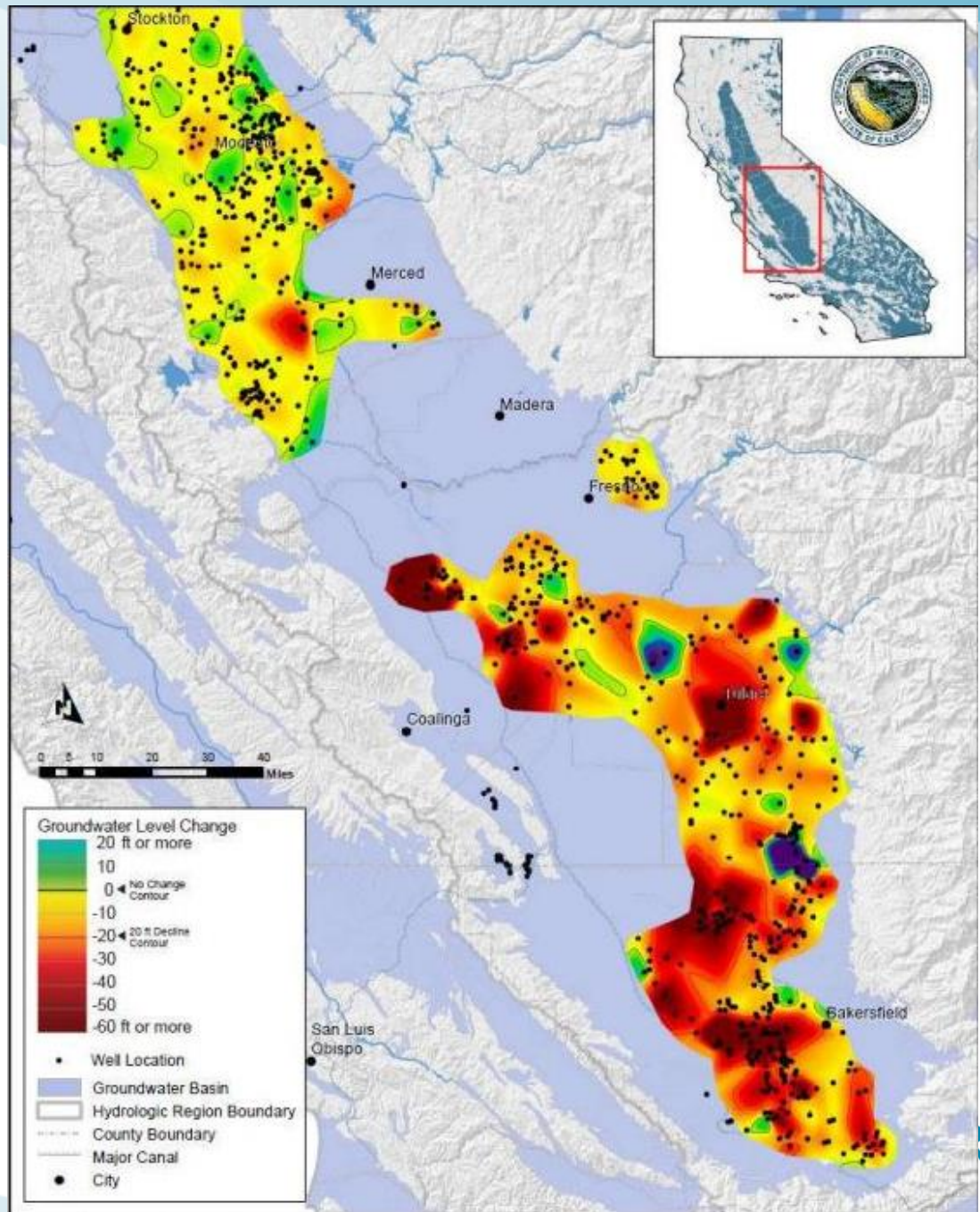
Jennifer Clary
Clean Water Action
June 24, 2015



Rural Impacts

- » Loss of water supply
- » Increasing contamination
- » Job losses in agricultural areas
- » Reduced access to food

Change in San Joaquin Valley Groundwater levels 2013-2014



Department of Water Resources

Loss of Water Supply

- » Total dry wells reported (since 2014): 2115
- » Highest #: Tulare County, 1126
- » #3: LA County, 150
- » #4: Ventura County, 120

Tulare County Water Delivery



Photo Courtesy of Community Water Center

State Actions

- » State Board Cleanup & Abatement
Account for emergency water supplies
- » General Fund \$\$ for assistance, mostly
Central Valley
 - o Local food banks
 - o Job training
 - o Housing assistance
 - o Water rate subsidies

East Porterville



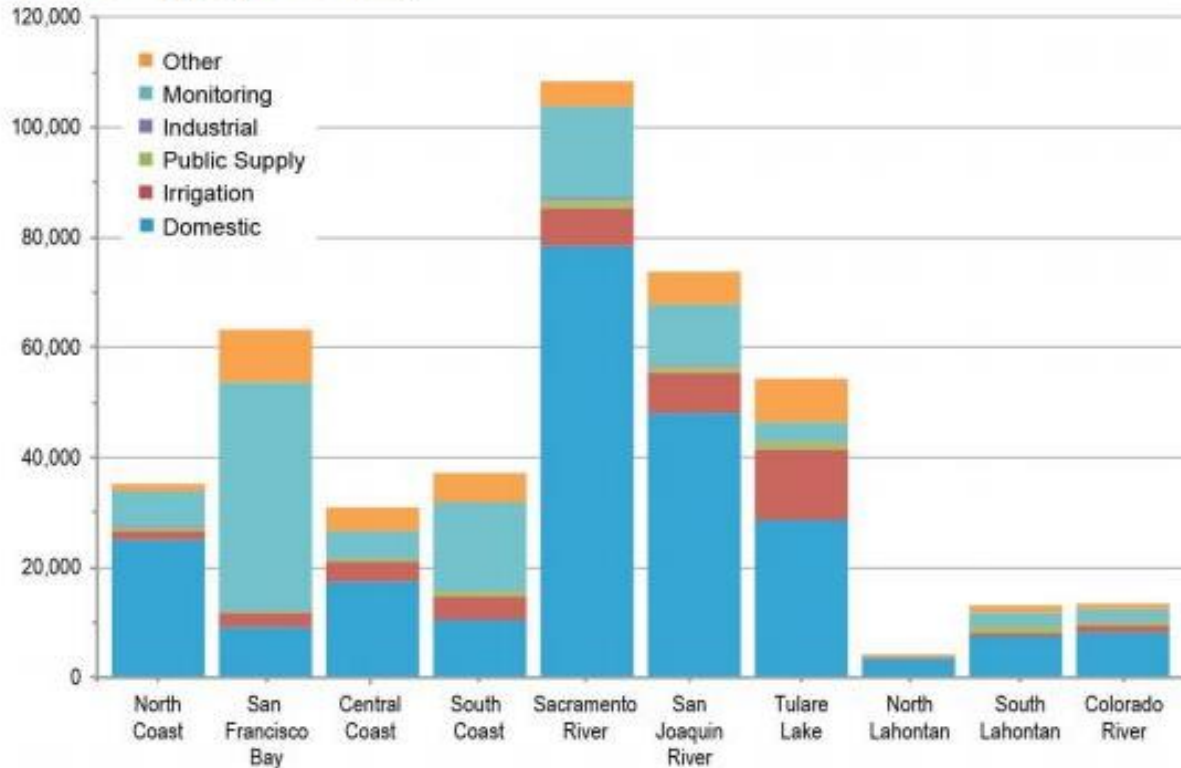
Photo Courtesy of Community Water Center

Californians not served by a public water system

- » Less 5-14 connections – state small systems
- » 1-4 connections – private wells
- » USGS Estimate 2.5 million
- » LA County estimate 575,900

Groundwater

Figure 2-4 Statewide Number of Well Logs by Hydrologic Region and Well Type (1977-2010)



Prepared by California Department of Water Resources for California's Groundwater Update 2013

Urban Impacts

- Higher costs for water
- Inequitable investments in conservation
- Reduced shade
- Higher cost and less access to local food sources

Affordability

- » Limited information collected about water rates and affordability
- » Tiered rate structures in jeopardy based on recent Capistrano decision
- » Prop 218 limits the ability to implement lifeline rates
- » Large number of water systems increases the difficulty of designing/implementing lifeline rates
- » Successful water conservation equals higher water rates



Reliance on alternative water supplies



Water Conservation

- » East LA – 51.4 gallons per capita per day, median income \$37,982
- » Beverly Hills – 235.9 gallons per capita per day, median income \$86,141
- » Distance between the two cities – 16 miles

Equity Challenges of Water Conservation Programs

- » Most based on rebate formulas
- » Indirect ratepayers (renters) have few options
- » Programs developed and funded by individual water agencies

Recommendations for conservation

- » Direct-install programs
- » Create community-based audit programs – jobs and conservation
- » State Water conservation draft funding guidelines due out this month for comment

Affordability - recommendation

- » **Support AB 401 (Dodd)**
- » Requires the Department of Community Services and Development (CSD), in collaboration with the Board of Equalization (BOE) and relevant stakeholders, to develop a plan to fund and implement a Low-Income Water Rate Assistance Program by January 1, 2017, for households with less than 200% of the federal poverty guideline level.

Affordability - recommendation

Support Prop 218 reform for 2016 ballot

- » Lifeline rates
- » Tiered rate structures
- » Stormwater

Monitor state small systems and domestic wells

- » Expand oversight of state small systems
- » Require testing of private wells when property is sold for coliform, nitrate and other potential contaminants

Don't create problems for the next generation!



COUNTY OF LOS ANGELES



Notice of Preparation

TO: Whom It May Concern

FROM:

County of Los Angeles
Department of Public Works
900 South Fremont Avenue
Alhambra, California 91803

Subject: **Notice of Preparation of an Environmental Impact Report for the Proposed Single-Family Residential Hauled Water Initiative for New Development and Notice of a Scoping Meeting, Date, and Location**

The County of Los Angeles will be the Lead Agency and will prepare an Environmental Impact Report (EIR) to assess the feasibility of the adoption of an ordinance to allow hauled water as the primary source of potable water for new single-family residential construction in unincorporated areas of the County of Los Angeles.

The County of Los Angeles will be the Lead Agency and will prepare an Environmental Impact Report (EIR) to assess the feasibility of the adoption of an ordinance to allow hauled water as the primary source of potable water for new single-family residential construction in unincorporated areas of the County of Los Angeles,

The County has estimated that, should the proposed initiative be adopted, approximately 42,872 parcel owners in the County could be eligible to seek authorization for use of hauled water to support issuance of a building permit for a single-family residence (see Topographic Map). The combined proposed initiative study area consists of approximately 342,715 acres or approximately 535 square miles.

References

State Drought Emergency website

» <http://ca.gov/drought/>

State Water Board drought website

» http://www.waterboards.ca.gov/waterrights/water_issues/programs/drought/

California Water Plan,

<http://www.waterplan.water.ca.gov/index.cfm>

USGS research on domestic wells, water use

» <http://www.sciencedirect.com/science/article/pii/S2214581814000305>

» http://ca.water.usgs.gov/water_use/index.html

Clean Water Action

» www.cleanwater.org/california