

Public Health Alliance of Southern California

Caren Trgovcich
Chief Deputy Director
State Water Board

October 28, 2015



What does the State Water Board do?

- Develops statewide water quality protection plans and policies
- Establishes water quality standards
- Protects public water systems
- Allocates water rights
- Adjudicates water right disputes
- Guides the 9 Regional Water Boards

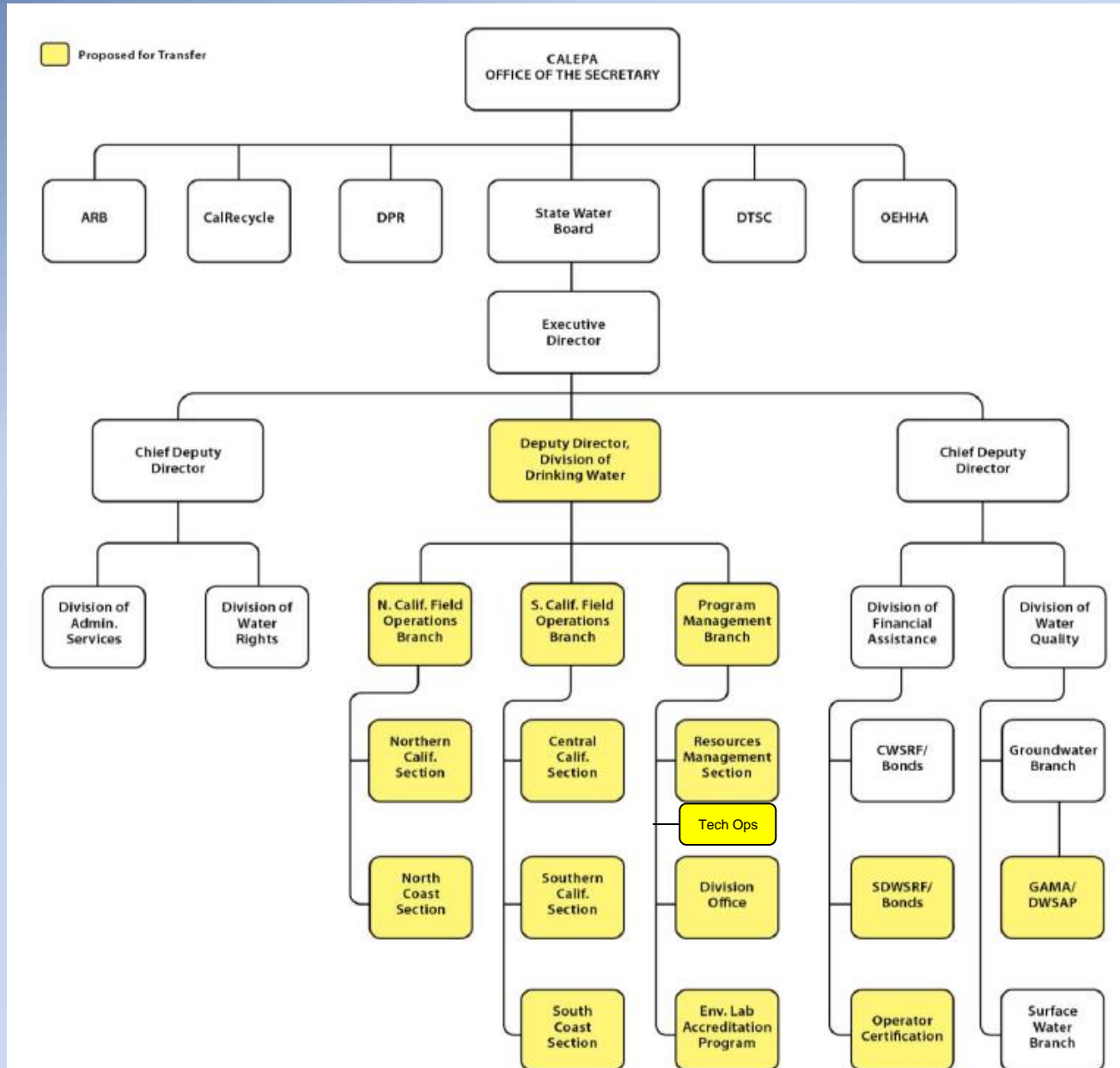
Current Board Priorities

- Drought Response
 - Conservation
 - Community water supplies
 - Water availability
 - Minimum water for fish
- Proposition 1 rollout
- Small community assistance
- Oil & gas industry discharges and monitoring
- Bay-Delta and Ca WaterFix
- Instream flow standards

Webinar Topics

- Drinking Water Program Transition
- OWTS Implementation
- Well Information Disclosure
- Dry Wells
- SGMA
- New PWS to meet TMF requirements

Division of Drinking Water Organization Chart



Program Integration Status

- Physical integration – ongoing
- Program Management Integration
- Program Priorities
- Inter-agency Relationships
- Transparency through Board process
- Transition advisory Group
- Expert Panels
- Program Reviews

DDW Priorities

- Curtailment Compliance Orders w/DWR
- Arsenic Compliance Orders
- LPA Program Oversight/Data Submission
- Disadvantaged Community Assistance
- Safe Drinking Water Plan Implementation
- SWS Program Plan Implementation
- Regulation Adoption
- Collaboration w/other Divisions & RWQCBs

OnSite Wastewater Treatment Systems Policy Implementation

- May 2014 – RBs to revise basin plans
- May 2016 – local agencies to submit LAMPs
- May 2017 – RB review and approval of LAMPs
- May 2018 – Local authority adjustment period

Dry Wells

2945 reported dry wells as of Oct. 27

2780 in Central Ca

152 in Southern Ca

13 in Coastal (North & Central) Ca



SGMA: Local Management

Local Planning

Groundwater Management Agencies

Tools

Sustainable
Groundwater Management



SGMA: Key dates for local agencies

Time	Action	Protects local water users from state intervention
6/30/2017	Form local agencies	<input checked="" type="checkbox"/>
1/31/2020	Adopt plans in critically overdrafted basins	<input checked="" type="checkbox"/>
1/31/2022	Adopt plans in all other basins	<input checked="" type="checkbox"/>
20-year implementation period	Successfully implement plans	<input checked="" type="checkbox"/>

Resources

- SGMA timeline:
http://www.waterboards.ca.gov/water_issues/programs/gmp/docs/local_asst/legtimeline.pdf
- GSA Interactive Map:
http://www.water.ca.gov/groundwater/sgm/gsa_map.cfm
- Ca Household Water Shortage Data:
<https://mydrywatersupply.water.ca.gov/report/publicpage>
- Safe Drinking Water Plan:
http://www.waterboards.ca.gov/publications_forms/publications/legislative/docs/2015/sdwp.pdf