

Health Disadvantage Index

CalEnviroScreen

Purpose

Tool to identify disadvantaged communities statewide based on factors influencing health, development and well-being (Social Determinants of Health).

Tool to help CalEPA target cleanup/remediation resources statewide by identifying communities with multiple pollution burdens.

Developer

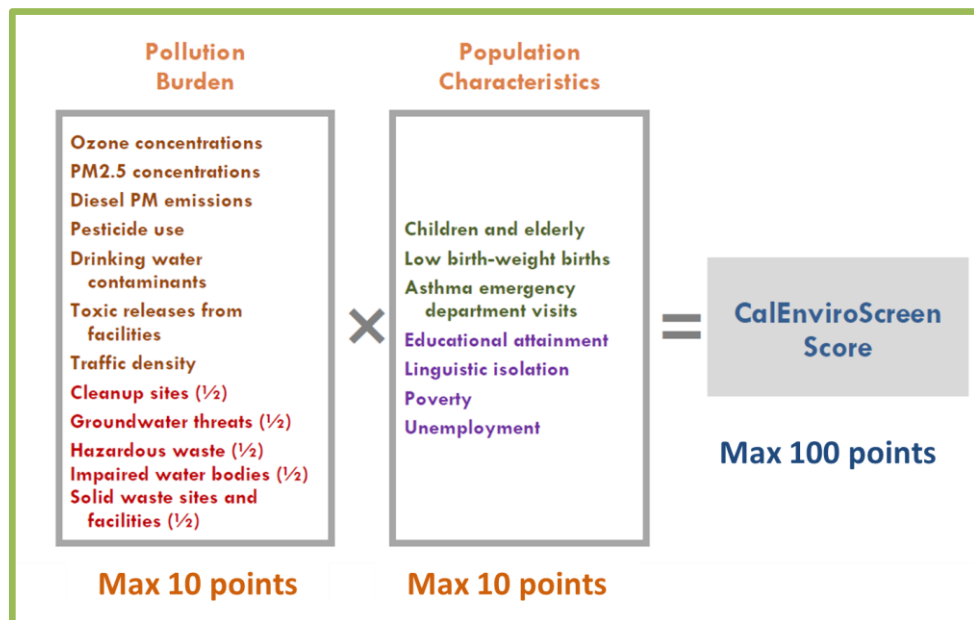
Public Health Alliance of Southern California and statewide local health department data experts

CalEPA's Office of Environmental Health Hazard Assessment (OEHHA)

California Health Disadvantage Index Methodology

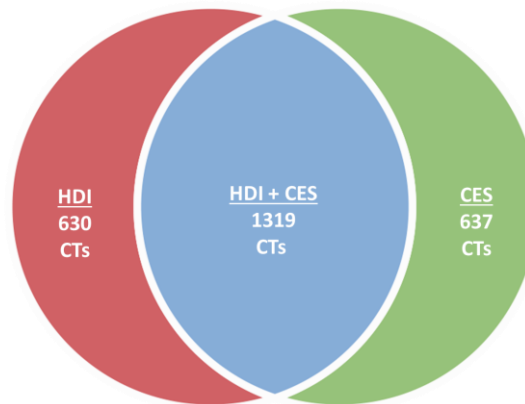
<u>Economic Resources</u>	<u>Social Resources</u>	<u>Educational Opportunity</u>	<u>Health Outcomes</u>	<u>Environmental Hazards</u>	<u>Complete Neighborhoods</u>	Sum of domains =100 points
50	15	10	10	10	5	
Poverty Crowding Housing Cost Unemployment Rate No Auto Access Median Income Uninsured No Kitchen	High school educational attainment Linguistic Isolation Renter Occupied Voting Single Parent Households	Residents whose age makes them eligible for, but not enrolled in Preschool High School	Population disabled Low Birth Weight Years of Life Lost Asthma ER Visits	Pedestrian Injuries PM 2.5 Concentration Traffic Density	Supermarket Access Park Access Retail Density Transit Service	

CalEnviroScreen Methodology



Comparing Outcomes

Number of census tracts identified as “Disadvantaged”
(in the top 25%) of scores statewide by tool.



CalEnviroScreen does not identify 32% of the most *health* disadvantaged census tracts (as defined by the Health Disadvantage Index) as disadvantaged.

Because their census tracts are not identified by the CalEnviroScreen tool, the 3.2 million highly disadvantaged people who live in those census tracts will not be eligible for disadvantaged community set asides under the Greenhouse Gas Reduction fund.

For more information

Health Disadvantage Index:

Map: <http://goo.gl/eZl5aP>

Contact:

Tracy Delaney Ph.D., R.D.
Executive Director
Public Health Alliance of Southern California
tdelaney@phi.org
work: 619.722.3403
cell: 619.873.6444

<http://www.PHASoCal.org>