



Learn more at: <https://phasocal.org/>

How Has the Role of LHDs Evolved Over Time?



1800s-
1900s

Sanitation & Disease Control

- Prevention and control of infectious diseases
- Bacterial control and identification in water systems



Cholera identification and prevention



Enforcement of sanitation & hygiene practices



2010s

Plan Engagement & Service Delivery

- Community provider and convening role
- Contracting with health plans for service delivery and population health management

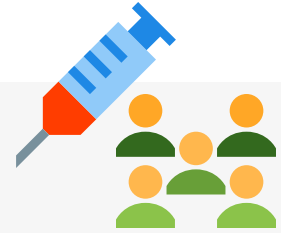


COVID-19 testing and contact tracing



Contracting with plans to provide Targeted Case Management services

1900s-
2000s



Community Health & Immunizations

- Partnering with schools and local clinics
- Education and prevention campaigns



Smoking cessation



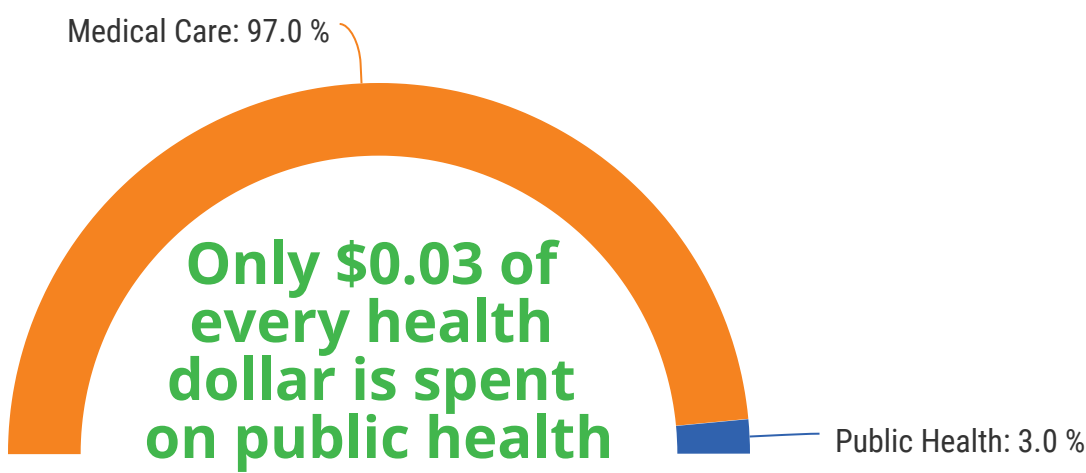
Occupational safety campaigns

PUBLIC HEALTH REPORT CARD ON SPENDING

Since 2007, local public health funding has stalled, yet robust support for Local Health Departments and the *essential* function they serve is needed now more than ever.

In 2007, California spent **\$78** on public health per capita. By 2018, California devoted only **\$66** to public health per capita.

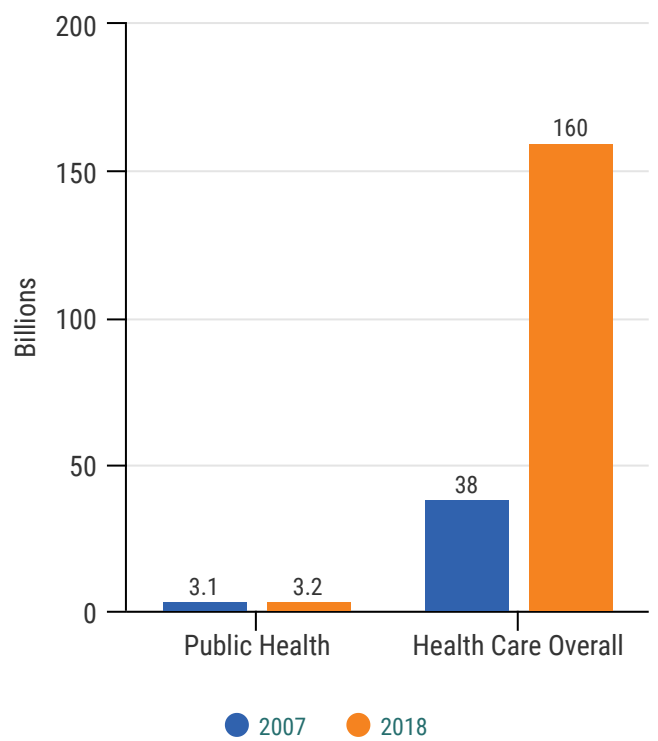
Expect More



For every health dollar spent in the U.S., 97 cents goes to medical care and **only 3 cents goes to public health and prevention**

Health Care & Public Health Spending 2007 vs. 2018

*National Health Expenditures Accounts. In Centers for Medicare & Medicaid Services, 2018



Health Care spending in California has **quadrupled** in size from 2007 to 2018, whereas Public Health funding has remained **stagnant**

What Funding Local Public Health Does for Communities



Promotes a Health in All policies approach



Advances environmental equity



Prepares rapid disaster and disease outbreak response



Increases accurate data access to combat health inequity



Provides essential support to population health management



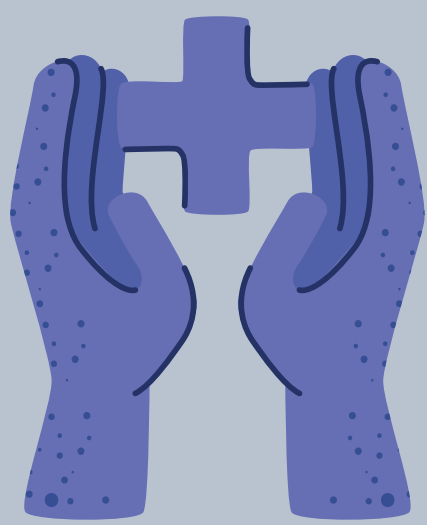
Supports climate change adaptation and resilience

THE VALUE OF LOCAL PUBLIC HEALTH

Protecting communities and saving lives

RETURN ON INVESTMENT

For every \$1 spent on Public Health, \$5.60 is reduced in overall health spending



PROMOTES HEALTHY COMMUNITIES

Public Health is a key part of population health and addressing the Social Determinants of Health (SDOH)

IMPROVES HEALTH OUTCOMES

For every 10% increase in local public health spending, infant mortality decreases 6.9%, cardiovascular mortality decreases 3.6%, and Diabetes mortality decreases 1.4%



ESSENTIAL TO DISEASE PREVENTION & RESPONSE

Local Health Departments are the backbone of the response to disease outbreak. They provide essential prevention, surveillance, and response services to their communities



INVESTMENT IN PUBLIC HEALTH IS IMPERATIVE

LEARN MORE AT [HTTPS://PHASOCAL.ORG/](https://phasocal.org/)